

21/02419/FUL - Demolition of
existing changing rooms and
erection of 2 storey classroom
at Peter Symonds college

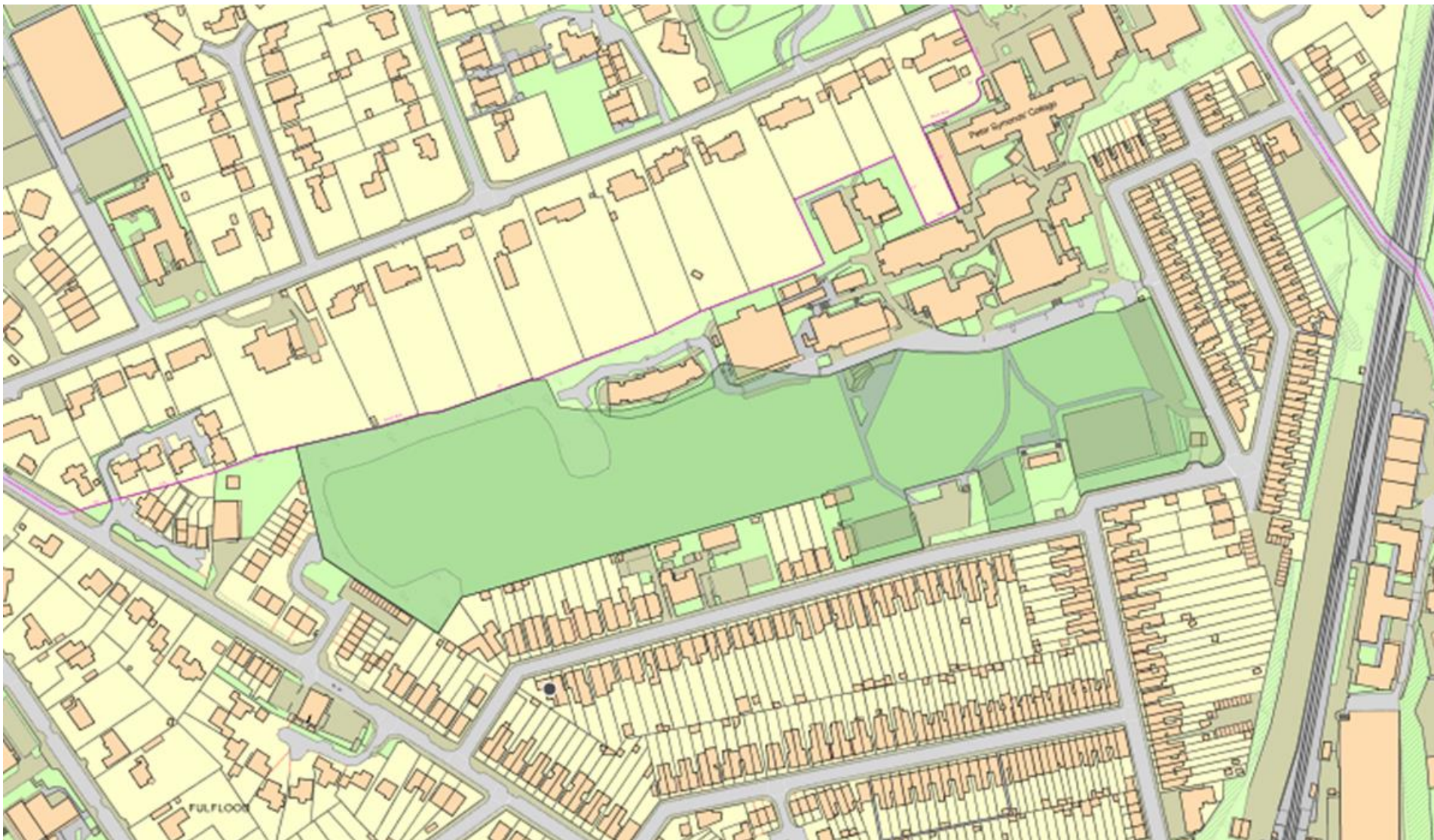


Location









Site with DM5 – Open space land
show in dark green

Site –
showing sun
movement
and DM5
open space
land

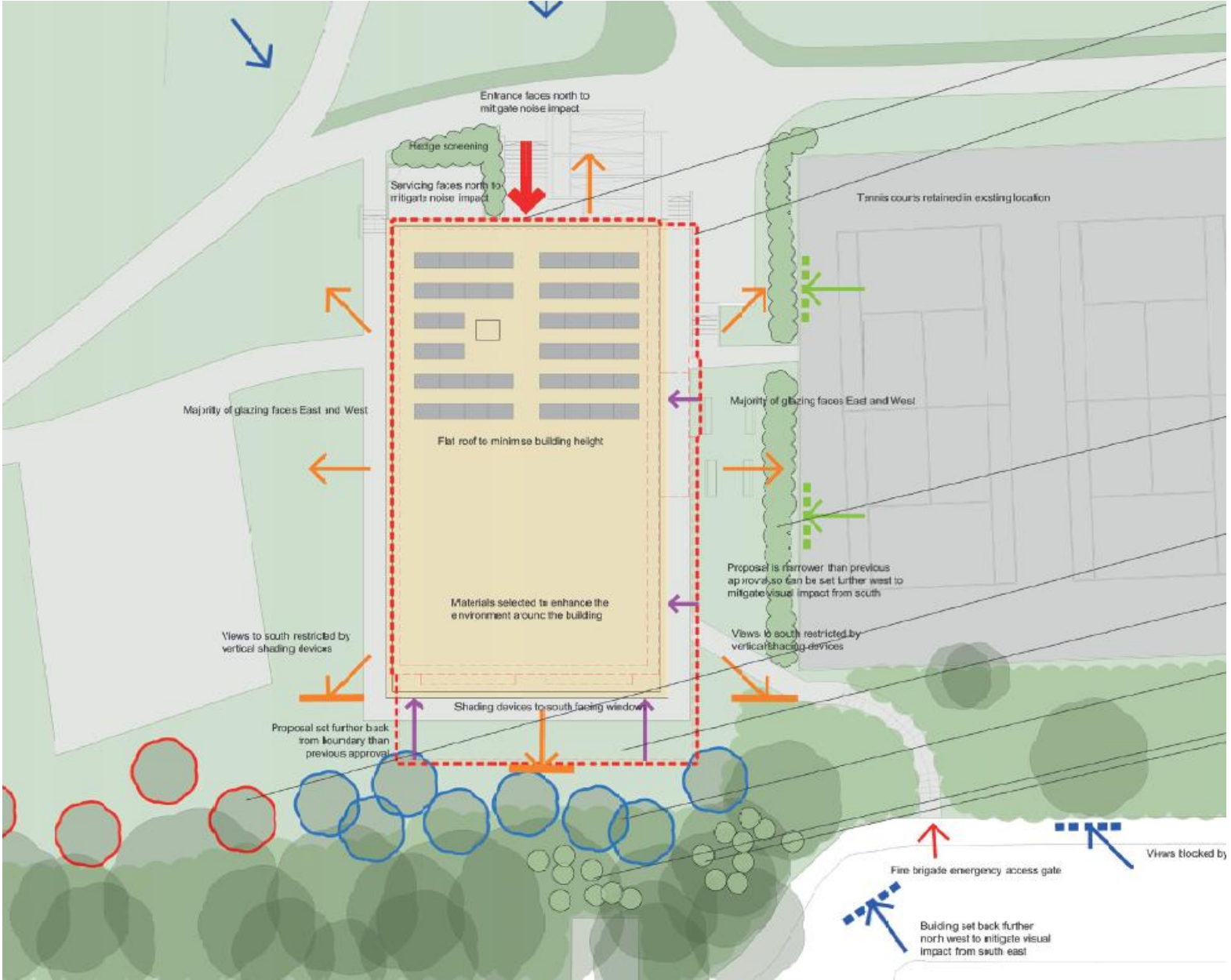




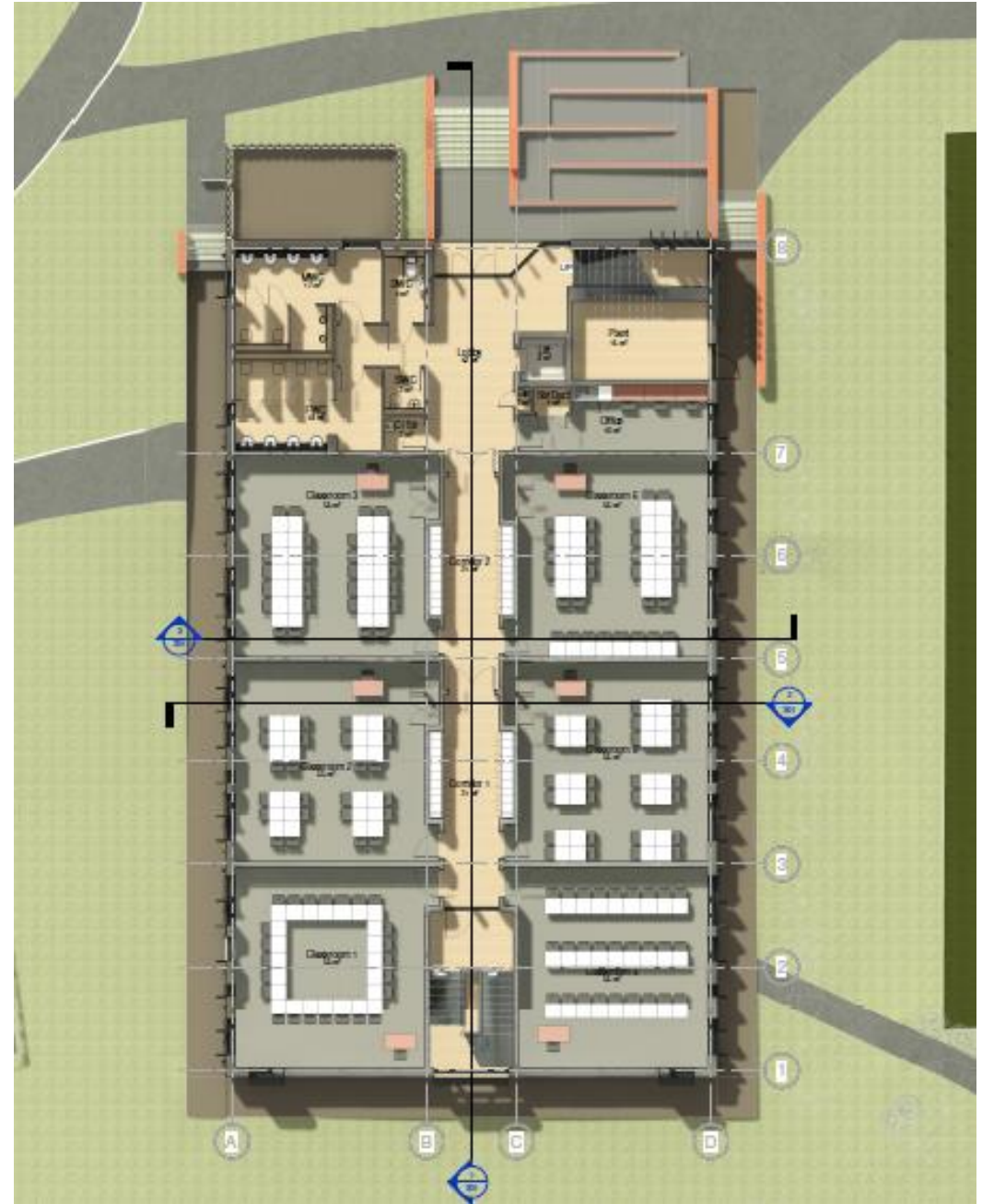
Site location

Proposed building

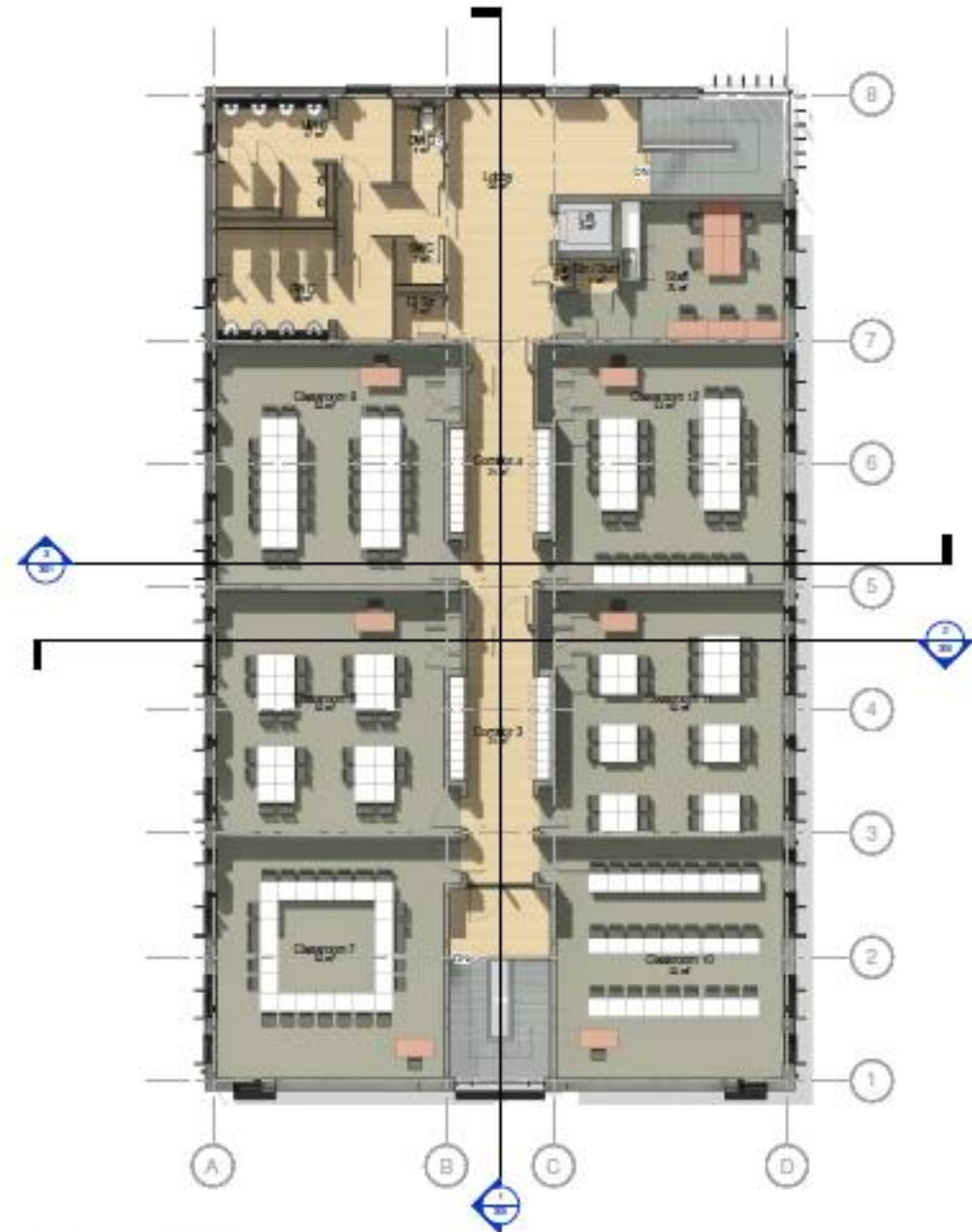




Ground floor plan



First floor plan



01 - First Floor FFL
1:100

Elevations



North



east

Elevations



south



west



3D view from east looking west



3D view from south looking north



3D view from north east
looking south west



3D view from the north



Photos of existing site
from the north



Previously permitted building



View from the south looking north from
Hatherley Road



Existing



Existing



Proposed



Proposed



3 3D View from Hatherley Rd
1:1

2 3D View from Cranworth Rd
1:1

View from first floor window on house on corner of Cranworth Road and Hatherley Road.



Within the site looking south



Within the site looking east

